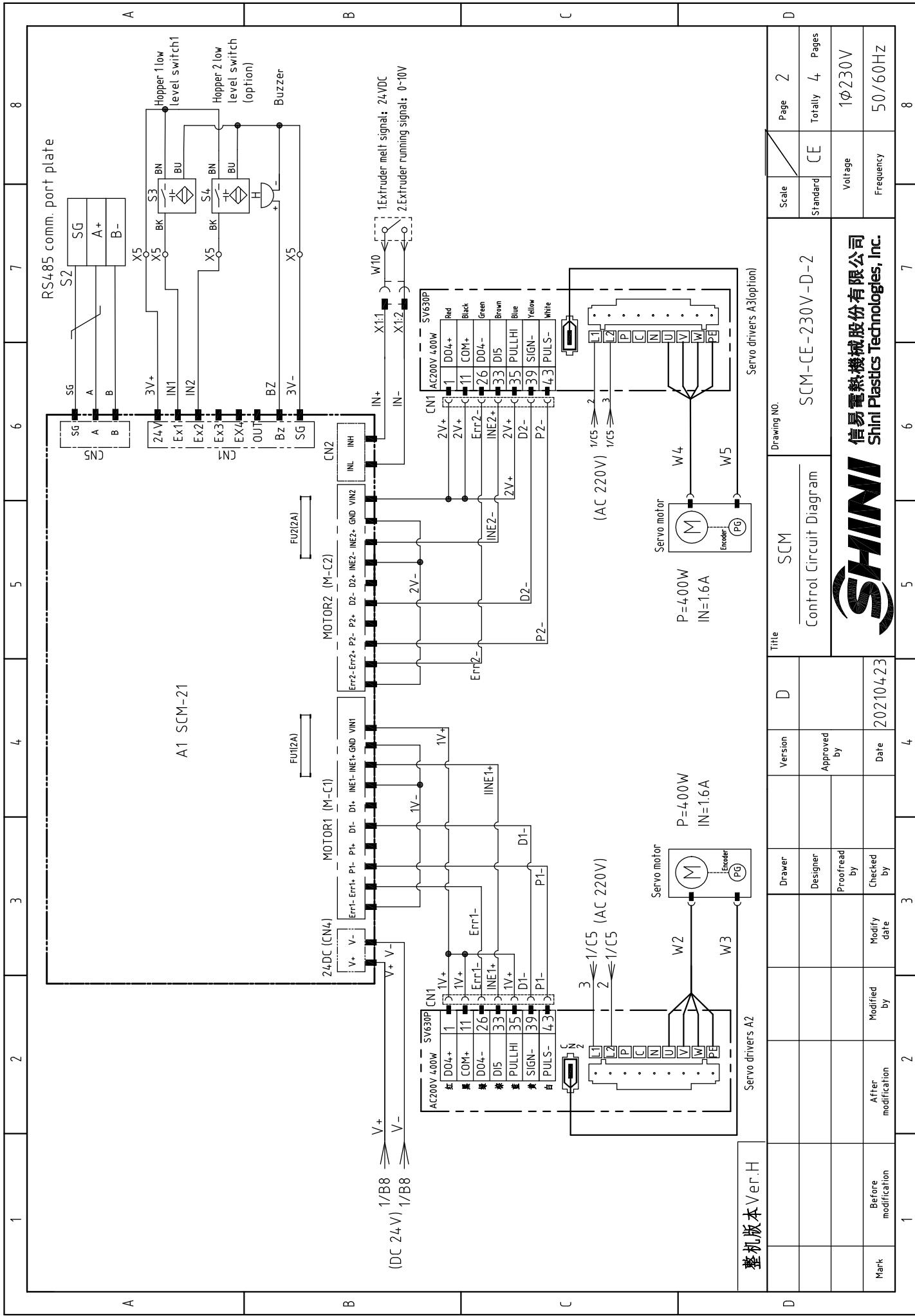


整机版本 Ver.H

Title		Drawing No.		Scale	Page
SCM		SCM-CE-230V-D-1		CE	1
Main Circuit Diagram				Standard	Totally 4 Pages
				Voltage	1Ø230V
				Frequency	50/60Hz
Version	D	Approved by	Date	8	
			20210423		
Drawer	Designer	Proofread by	Checked by		
After modification	Modified by	Modify date			
1	2	3	4	5	7





A1 SCM-21

整机版本 Ver.H

Servo drivers A2

Servo motor

P=400W
IN=1.6A

Servo motor

P=400W
IN=1.6A

Servo drivers A3(option)

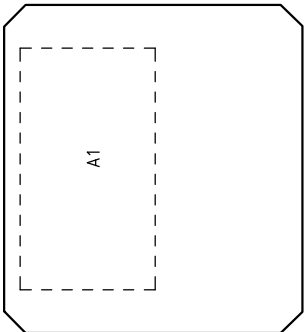
Mark	Before modification	Modified by	Modify date	Checked by	Date	Version	D	Title	SCM	Drawing NO.	SCM-CE-230V-D-2	Scale	Page 2
	After modification				20210423		Approved by				Control Circuit Diagram		Standard
											Voltage	1Ø230V	
											Frequency	50/60HZ	
1	2	3	4	5	6	7	8						



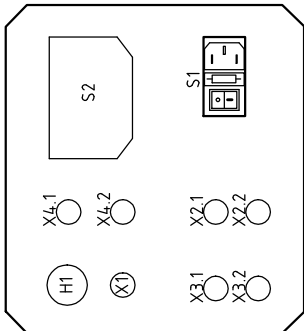
Servo signal pin definition

30D18	15+5V
44PZ-OUT	14-COM-
29GND	13PZ0-
33PULSE	28D05+
42H5IGN+	12D19
41PULSE+	27D05-
40H5IGN-	26D04-
39PBO+	16D12
38HPULSE+	9D11
24PZ0-	8D14
23PBO-	7D01-
37SIGN+	22PA0-
36HPULSE	6D01+
20-	5D02-
34D13	4D02-
33D15	3D03+
32-	2D03-
31-	1D06+
16GND	

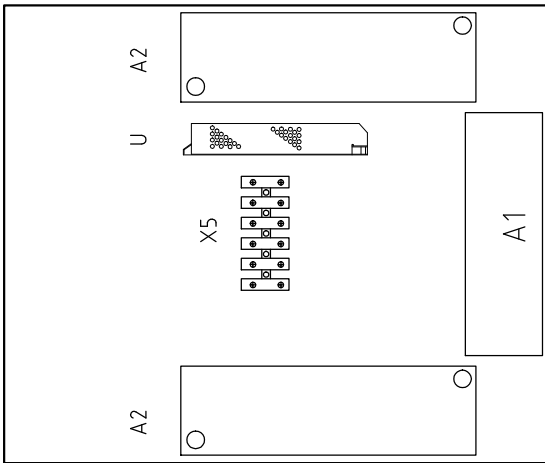
Control box panel layout



Metal connector layout



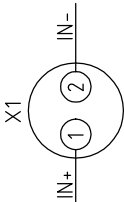
Elec. component layout



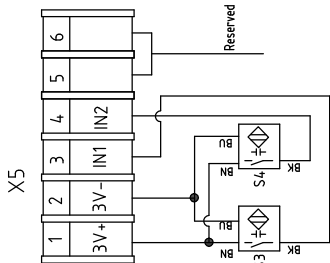
Servo driver 1 pin definition and wiring diagram

Pin Description	Pin No.	Wiring No.
Fault output	DO4+	1V+
Power input end	COM+	1V+
Fault output	DO4-	Err1+
Servo enabling	D15	INE1+
Expower input interface of the command pulse	PULLHI	1V+
Direction enabling signal	SIGN-	D1-
Low speed pulse enabling	PULSE-	P1-

Servo driver 1 pin definition and wiring diagram



Injection/extrusion signal 2P metal connector wiring diagram



- X1: Connect to extruder melt signal or extruder 0-10V screw rotary speed signal
- X2.1: Encoder 1 wire outlet
- X2.2: Servo motor 1 wire outlet
- X3.1: Encoder 2 wire outlet (option)
- X3.2: Servo motor 2 wire outlet (option)
- X4.1: Hopper 1 level switch wire outlet
- X4.2: Hopper 2 level switch wire outlet (option)
- S2: Communication interface
- S1: Power switch + fuse
- H1: Alarm buzzer

Servo driver 2 pin definition and wiring diagram

Pin Description	Pin No.	Wiring No.
Fault output	DO4+	2V+
Power input end	COM+	2V+
Fault output	DO4-	Err2+
Servo enabling	D15	INE2+
Expower input interface of the command pulse	PULLHI	2V+
Direction enabling signal	SIGN-	D2-
Low speed pulse enabling	PULSE-	P2-

Connect to hopper 1 low level switch

Connect to hopper 2 low level switch (option)

整机版本 Ver.H

	Drawer	Version	Title	Scale	Page
	Designer	Approved by	SCM	Standard	Totally 4
	Proofread by		Elec. Layout & Wiring Diagram	CE	Pages
	Checked by	Date	SCM-CE-230V-D-3	Voltage	1φ230V
	Modified by	Modify date		Frequency	50/60HZ
	After modification				
Mark	Before modification	20210423			8



1		2		3		4		5		6		7		8																																																																																																			
NO.	Symbol	Name	Manufacturer	Type	Specification	Number	Material number	Remark																																																																																																									
1	A1	Microcomputer touch panel controller/PCB+HMI	YUYUN	SCM-21	24VDC	1	YE80212400100																																																																																																										
2	S1	Power switch + plug wire	MISUMI	APCJ-101-1FR-03	AC90-56A-53-375-2	1	YE15111300000																																																																																																										
3	W1	Fuse	JIANDONG	5x20	10A	1	YE46521000000	one use on backup																																																																																																									
4		CE Power Line	RENYI	1.0x3P	10A	1	YE50122500000	CE Power Line																																																																																																									
5		GB Power Line	YONGTAO	0.75x3C	10A	1	YE50316300000	CB Power Line																																																																																																									
6	H1	Buzzer	JINGKANG	PK-27A/29EP	24 VDC	1	YE84002700000																																																																																																										
7	U	DC Power	MEANWELL	LRS-35-24	IN=115/230V OUT=24VDC 1.5A	1	YE71352400100																																																																																																										
8	X1	Metal connector	CHAOYI	PLT-162-RR(male)	2P	1	YE68016200100																																																																																																										
9	X1	Metal connector	CHAOYI	PLT-162-PR(female)	2P	1	YE68016200000																																																																																																										
10	X2 X3 X4	Cable head	JUKUANG	PG9	----	2	YE67000940000																																																																																																										
11	X5	Terminal Board	TIANGONG	PA9X	6P	1	YE61001200000																																																																																																										
12	S2	Communication interface board RS-485 (double Dsub-9pin connector)	YUYUN	----	----	1	YE90048501200																																																																																																										
13		Shell RS485(SAL-700G-A-19)ver.0	BINCHENG	----	----	1	YR40048500000																																																																																																										
14	S3	Capacitor proximity switch	IFM	KI5082+EVS0	10~36VDC	1	YE15508200000	(1)																																																																																																									
15	S4	Capacitor proximity switch	IFM	KI5082+EVS0	10~36VDC	1	YE15508200000	(1)(2)																																																																																																									
16	M1 (W2,W3)	Servo motor	INOVANCE	MS1H1-4.0B30CB-T331Z	4.00W(include encoder wire and power wire >)	1	YE50040000300	(1)																																																																																																									
17	A2(CN1)	Servo driver	INOVANCE	SV630CS2R81-JXS	4.00W(include CN1 terminal)	1	YM10463000800																																																																																																										
18	M2 (W2,W3)	Servo motor	INOVANCE	MS1H1-4.0B30CB-T331Z	4.00W(include encoder wire and power wire >)	1	YE50040000300	(1)(3)																																																																																																									
19	A3(CN1)	Servo driver	INOVANCE	SV630CS2R81-JXS	4.00W(include CN1 terminal)	1	YM10463000800	(3)																																																																																																									
20	W10	Signal cable 0.75x2Cx4M(for SPV/SCM)	----	----	BA	1	BE51075200050																																																																																																										
<p>整机版本 Ver.H Notes: (1)Means it's not the material inside the control box. (2) Level switch options (3) Double color doser SCM-D options;</p>																																																																																																																	
<table border="1"> <tr> <td colspan="2">Title</td> <td colspan="2">Drawing NO.</td> <td colspan="2">Scale</td> <td colspan="2">Page</td> <td colspan="8"></td> </tr> <tr> <td colspan="2">SCM</td> <td colspan="2">Electrical Parts List 1</td> <td colspan="2">SCM-CE-230V-D-4</td> <td colspan="2">CE</td> <td colspan="2">4</td> <td colspan="8"></td> </tr> <tr> <td colspan="2">Version</td> <td colspan="2">Approved by</td> <td colspan="2">Voltage</td> <td colspan="2">Totally</td> <td colspan="8"></td> </tr> <tr> <td colspan="2">D</td> <td colspan="2">Date</td> <td colspan="2">Frequency</td> <td colspan="2">4</td> <td colspan="8"></td> </tr> <tr> <td colspan="2">20210423</td> <td colspan="2">20210423</td> <td colspan="2">1φ230V</td> <td colspan="2">4</td> <td colspan="8"></td> </tr> <tr> <td colspan="2">2</td> <td colspan="2">3</td> <td colspan="2">7</td> <td colspan="2">8</td> <td colspan="8"></td> </tr> </table>																Title		Drawing NO.		Scale		Page										SCM		Electrical Parts List 1		SCM-CE-230V-D-4		CE		4										Version		Approved by		Voltage		Totally										D		Date		Frequency		4										20210423		20210423		1φ230V		4										2		3		7		8									
Title		Drawing NO.		Scale		Page																																																																																																											
SCM		Electrical Parts List 1		SCM-CE-230V-D-4		CE		4																																																																																																									
Version		Approved by		Voltage		Totally																																																																																																											
D		Date		Frequency		4																																																																																																											
20210423		20210423		1φ230V		4																																																																																																											
2		3		7		8																																																																																																											
<p>SHINI 信易電熱機械股份有限公司 Shini Plastics Technologies, Inc.</p>																																																																																																																	